



We reach for the sky.

YOUR WAY  
— TO THE —  
**TOP**  
REALISE THE POTENTIAL



**Truck Mounted Cranes**

[www.boecker-group.com](http://www.boecker-group.com)

- Low Outrigger Loadings
- Can setup and work in areas inaccessible to conventional mobile cranes
- Ability to operate without additional mats in many areas
- Faster setup and derig



# Maximum performance makes the difference!



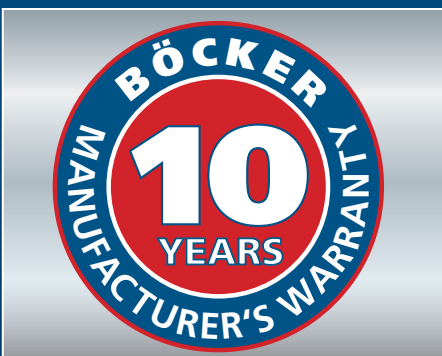
## Extremely durable boom

- Precise work due to a high strength and torsion stiffness of the profiles
- Unique longevity and value stability due to close masts
- No perforation of the mast at the traction and compression chord ensures highest level of stability
- No welding seams in accessible places assure extremely low maintenance costs
- A closed profile prevents foreign bodies from entering
- Over 25 years of experience in building aluminium cranes



## Precise telescoping under load

- Sensitive telescoping even with high loads due to a sophisticated control and mast system
- Smooth telescoping even in flat mast positions thanks to the use of flyer chains and hydraulic cylinders for jobs to be done within a tight space
- No problems with a slack rope as with the older telescoping technology and therefore extremely low maintenance costs
- Maximum flexibility and safety for all jobs to be done



## Uncompromising longevity

- Reliable components from well-known manufacturers with a worldwide service
- Proven continuous stress tests for all telescopic and support cylinders as well as for slide rails and wire ropes
- Biodegradable hydraulic oil with an extreme longevity and minimum maintenance costs
- Unique guarantee up to 10 years for all masts
- High value stability and investment reliability



## Precise radio control

- Radio-remote control with integrated graphic display made from one of the world's leading leading manufacturers (HBC radiomatic)
- Simple and clear presentation of the operating situation with pictograms for an intuitive and safe handling
- Sophisticated control offers operation suggestions, e.g. when reaching the limit stop or the maximum range during the set-up of the crane
- Indication of fuel status and service intervals on the display in due time
- Standard diagnose function on the display of the radio-remote control
- Efficient operation due to a simultaneous control of several core functions without annoying switching



## One engine for truck, crane and platform

- Reduced operational costs as a result of reduced maintenance works and fuel consumption compared to smaller auxiliary drives
- Easy and safe to handle – one tank, one fuel and one refilling process
- No additional noise disturbance as the access platform does not need a separate drive unit
- Maximum reliability compared to small and undersized drives units



## Powerful drive unit

- Maximum working speeds thanks to powerful PTO of the truck
- Sufficient power reserves in any operational situation
- Lifting of the maximum load is always possible
- Operation of several crane functions at the same time ensures effective work
- High lifting speed up to 65 m/min guarantee maximum efficiency



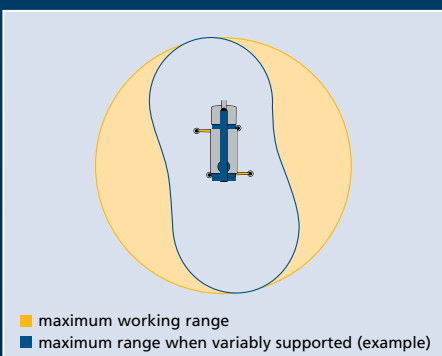
## Stable outrigger system

- Particularly stable support legs made of fine-grained steel for maximum stability and safe standing position
- Solid hydraulic cylinder for lateral extension of the support legs and continuously variable height levelling
- High jack lift of the outriggers guarantee ground clearance
- Support plates are safely stowed on the crane, protected against theft and easily accessible at any time
- Robust LED-flash light are safely integrated in the supports for a simple protection of the site of operation



## Fully variable outriggers

- Fully independent adjustment of each crane outrigger ensure a flexible installation and an optimal assembling geometry
- Automatic leveling function guarantees a fast and safe installation of the crane by completely using the radio-remote control
- Uniquely small slewing radius thanks to the design makes operations at a roadside with moving traffic possible
- Working on extremely confined construction sites and obstacles
- Maximum stability regardless of the weather due to consistent and multiply secured overall-safety concept



## PLC control for maximum safety

- Ultra-modern control ensures a sensitive and precise work with low vibrations
- Automatic approval of the maximum working range depending on the position of supports and attached load guarantees safe working
- Additional limitation of rotation angle for limiting the area of work e.g. operations close to high-voltage lines
- Choose between slow and quick movement depending on working situation
- Redundant safety concept – two separate safety circuits continuously monitor each other thus guaranteeing maximum working safety
- Entire safety concept certified by German technical inspection authority (TÜV Süd)

## User-friendly even in the limit range

- "Getting stuck" is impossible in any position thanks to the modern PLC control technology
- Smooth starting in any working situation ensures maximum operation comfort
- Precise control of the crane under any operational circumstances facilitates the operation
- Retractable jib with rated capacity limiting system monitored by sensors, therefore no annoying plugging of helix cables required



## Maximum working ranges

- Precisely putting down the load e.g. on the rear side of the roof thanks to the precise control and stable boom technology
- Maximum working ranges up to the rear side of the roof ensure effective working without moving the crane
- Extremely powerful even while carrying medium or heavy duties
- Powerful brake of slew ring prevents the entire bodywork from turning even with high wind load and maximum working ranges



## Sophisticated access platform technology

- Different work cages with a payload of 250 kg for various applications
- Rotatable access platform for operations under extremely narrow site conditions
- Extremely short changeover times without separate tools thanks to well-thought-out locking mechanism
- Automatic leveling function of the access platform ensures comfortable working
- Connection to crane electric, therefore no separate drive unit, no additional emissions, more space and maximum operational safety
- Fast relocation as the access platform remains on the crane for onsite manoeuvring
- 230 volt power supply in the platform



## Future-proof and environmentally friendly

- Biodegradable hydraulic oil with extreme durability and lowest water hazard class
- Modern truck engine technology (Euro 6) with maximum combustion efficiency guarantees optimum performance at reduced fuel and oil consumption as well as excellent emission values
- Superior emission values compared to smaller engines without diesel particulate filter
- Provable reduced fuel consumption due to latest engine technology
- Böcker cranes may be used in any environmental protection zone thus they are future-proof



## Comprehensive range of accessories

- Maximum versatility – accessories specifically tailored to each operation
- Lightweight aluminium design for maximum payloads and ranges
- Roof-tile clamps and platforms in various sizes and designs
- Tipper baskets and pallet forks in different sizes
- The Böcker crane accessories guarantee highly efficient work flows

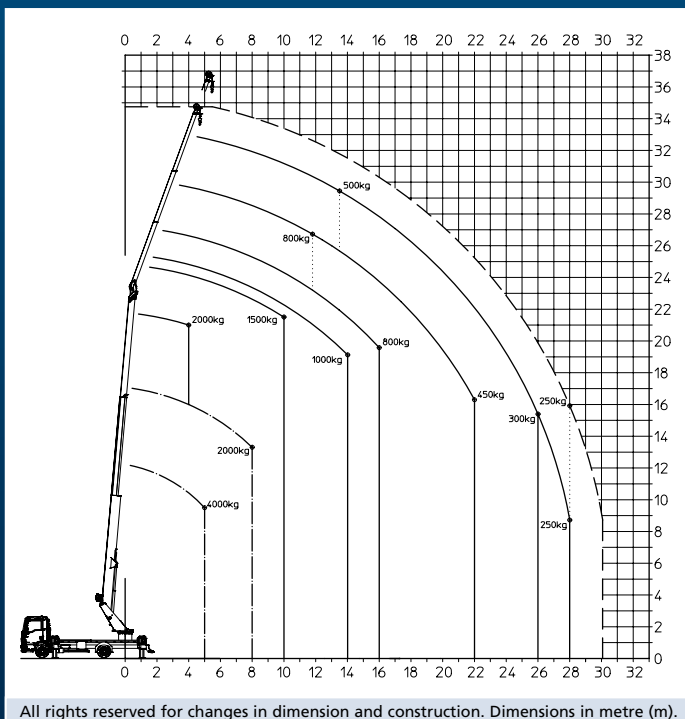


# Truck Crane AK 37 / 4000

**NEW**



## Duty chart



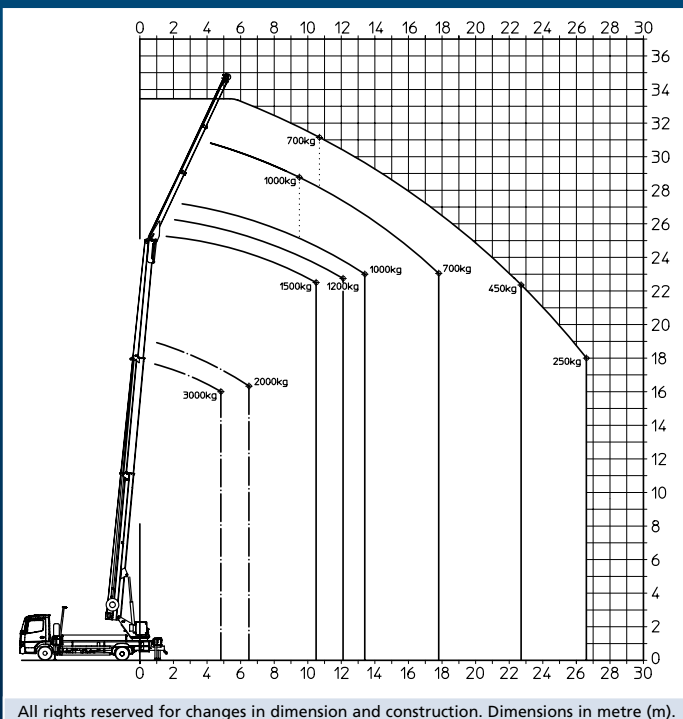
## Technical specifications

Payload max. [kg]	2,000 (opt. 4,000)
Extension length max. [m]	35.00 (opt. 37.00)
Main boom length max. [m]	23.30
Jib extendible [m]	4.87 – 11.00 (opt. 13.00)
Jib payload [kg]	2,000 / 800 / 500 / (250)
Main boom angle approx. [degrees]	85
Jib angle approx. [degrees]	162
Lifting speed approx. [m/min]	60
Support area L x W / (to one side) [m]	5.40 x 5.55 / (3.96)
Vehicle dimensions L x B x H [m]	8.35 x 2.55 x 3.80
Wheelbase min. [mm]	4,200
Gross vehicle weight [t]	7.49
Working height platform operation [m]	30.50
Lateral range with access platform [m]	21.10 at 250 kg 24.00 at 100 kg

# Truck Crane AK 35 / 3000



## Duty chart



All rights reserved for changes in dimension and construction. Dimensions in metre (m).

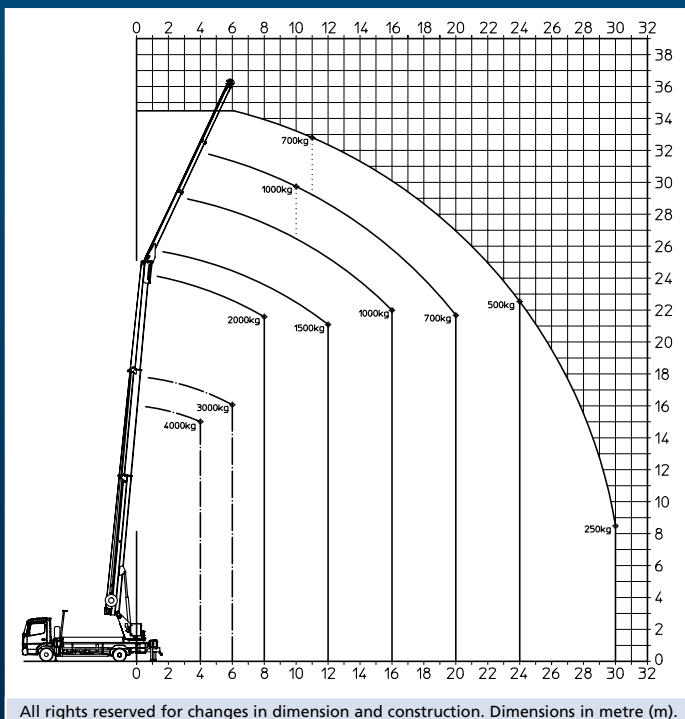
## Technical specifications

Payload max. [kg]	1,500 (opt. 3,000)
Extension length max. [m]	34.40
Main boom length max. [m]	24.40
Jib extendible [m]	5.20 – 11.20
Jib payload [kg]	1,500 / 1,000 / 700
Main boom angle approx. [degrees]	85
Jib angle approx. [degrees]	160
Lifting speed approx. [m/min]	65
Support area L x W / (to one side) [m]	5.40 x 5.55 (3.96)
Vehicle dimensions L x B x H [m]	9.70 x 2.55 x 3.95
Wheelbase min. [mm]	3,920
Gross vehicle weight [t]	8.60
Working height platform operation [m]	33.00
Lateral range with access platform [m]	21.10 at 250 kg 24.10 at 100 kg

# Truck Crane AK 36 / 4000



## Duty chart



## Technical specifications

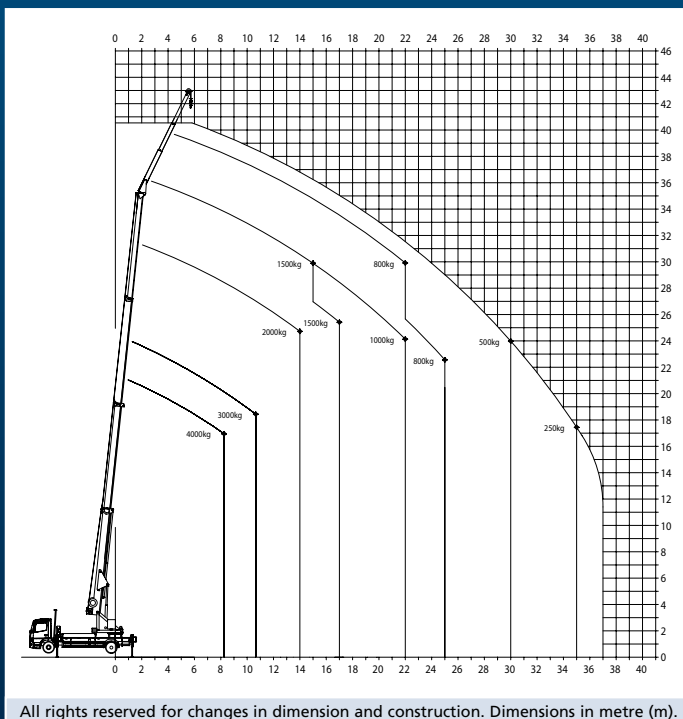
Payload max. [kg]	2,000 (opt. 4,000)
Extension length max. [m]	36.00
Main boom length max. [m]	25.50
Jib extendible [m]	5.20 – 11.20
Jib payload [kg]	2,000 / 1,000 / 700
Main boom angle approx. [degrees]	85
Jib angle approx. [degrees]	160
Lifting speed approx. [m/min]	60
Support area L x W / (to one side) [m]	6.28 x 5.55 (3.96)
Vehicle dimensions L x B x H [m]	9.90 x 2.55 x 3.85
Wheelbase min. [mm]	4,500
Gross vehicle weight [t]	11.99
Working height platform operation [m]	33.00
Lateral range with access platform [m]	24.00 at 250 kg 27.00 at 100 kg



# Truck Crane AK 42 / 4000



## Duty chart



All rights reserved for changes in dimension and construction. Dimensions in metre (m).

## Technical specifications

Payload max. [kg]	4,000
Extension length max. [m]	42.00
Main boom length max. [m]	33.00
Jib extendible [m]	4.55 – 8.90
Jib payload [kg]	2,000 / 1,500 / 800
Main boom angle approx. [degrees]	87
Jib angle approx. [degrees]	165
Lifting speed approx. [m/min]	65
Support area L x W / (to one side) [m]	6.28 x 5.55 (3.96)
Vehicle dimensions L x B x H [m]	10.55 x 2.55 x 3.99
Wheelbase min. [mm]	5,425
Gross vehicle weight [t]	15.5
Working height platform operation [m]	41.50 (38.00)
Lateral range with access platform [m]	30.00 at 250 kg 33.00 at 100 kg

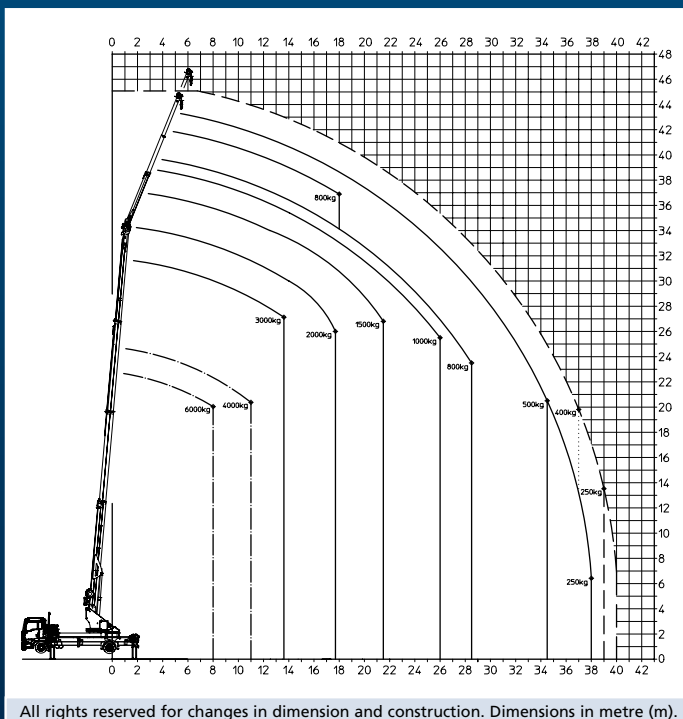


# Truck Crane AK 46 / 6000

**NEW**



## Duty chart



## Technical specifications

Payload max. [kg]	3,000 (opt. 6,000)
Extension length max. [m]	44.00 (opt. 46.00)
Mechanic extension length max. [m]	33.00
Jib extendible [m]	5.28 – 11.00
Jib payload [kg]	3,000 / 1,500 / 800 / (450)
Main boom angle approx. [degrees]	85
Jib angle approx. [degrees]	161
Lifting speed approx. [m/min]	45
Support area L x W / (to one side) [m]	6.43 x 6.06 (4.21)
Vehicle dimensions L x B x H [m]	10.30 x 2.55 x 3.99
Gross vehicle weight [t]	18/26
Working height platform operation [m]	43.40
Lateral range with access platform [m]	33.10 at 250 kg 35.30 at 100 kg

**Böcker – made in  
GERMANY**



**DENSEST  
SERVICE-NETWORK  
IN EUROPE**

**Böcker Belgium NV**

Boomsesteenweg 101 · B-2630 Aartselaar  
Fon +32 (0) 3 / 45 76 241  
Fax +32 (0) 3 / 45 76 242  
Mail [belgium@boecker-group.com](mailto:belgium@boecker-group.com)

**Böcker France SAS**

Zac du TEC · F-30320 Marguerittes  
Fon +33 (0) 4 6620 9364  
Fax +33 (0) 4 6620 9926  
Mail [france@boecker-group.com](mailto:france@boecker-group.com)

**Böcker Italia srl**

Corso Porta Nuova 11 · I-37122 Verona (VR)  
Fon +39 045 / 87 80 399  
Fax +39 045 / 87 80 420  
Mail [italia@boecker-group.com](mailto:italia@boecker-group.com)

**Böcker Nederland B.V.**

De Geerden 22 · NL-5334 LE Velddriel  
Fon +31 (0) 418 / 571 444  
Fax +31 (0) 418 / 635 222  
Mail [nederland@boecker-group.com](mailto:nederland@boecker-group.com)

**Böcker Schweiz AG**

Striegelstraße 1 · CH-4665 Oftringen  
Fon +41 (0) 62 / 797 62 62  
Fax +41 (0) 62 / 797 62 68  
Mail [schweiz@boecker-group.com](mailto:schweiz@boecker-group.com)

**Böcker Satış Ofisi Türkiye**

TR-34315 Denizköşkler Avcılar / İstanbul  
Fon +90 (542) 618 06 96  
Fax +49 (0) 2389 / 7989-9134  
Mail [tuerkiye@boecker-group.com](mailto:tuerkiye@boecker-group.com)

**Branch office north**

Farmers Ring 8 · D-25337 Koelln-Reisiek  
Fon +49 (0) 4121 / 57 10 00  
Fax +49 (0) 4121 / 57 10 01  
Mail [nlNord@boecker-group.com](mailto:nlNord@boecker-group.com)

**Branch office east**

Freiheit 20–21 · D-13597 Berlin-Spandau  
Fon +49 (0) 30 / 3 39 39 04-0  
Fax +49 (0) 30 / 3 39 39 04-29  
Mail [nlOst@boecker-group.com](mailto:nlOst@boecker-group.com)

**Branch office middle**

Kasseler Str. 62 · D-34277 Fulda  
Fon +49 (0) 561 / 5 85 46 73  
Fax +49 (0) 561 / 5 85 46 74  
Mail [nlMitte@boecker-group.com](mailto:nlMitte@boecker-group.com)

**Branch office south-west**

Bussardstr. 16 · D-68753 Waghäusel  
Fon +49 (0) 72 54 / 9 58 85-0  
Fax +49 (0) 72 54 / 9 58 85-29  
Mail [nlsuedwest@boecker-group.com](mailto:nlsuedwest@boecker-group.com)

**Branch office south**

Kirchweg 4 · D-82239 Alling  
Fon +49 (0) 81 41 / 888 601  
Fax +49 (0) 81 41 / 53 72 707  
Mail [nlsued@boecker-group.com](mailto:nlsued@boecker-group.com)



We reach for the sky.

**Böcker Maschinenwerke GmbH**  
Lippestraße 69–73 · D-59368 Werne  
Fon +49 (0) 23 89 / 79 89-0  
Fax +49 (0) 23 89 / 79 89-9000  
Mail [info@boecker-group.com](mailto:info@boecker-group.com)